

**Kenwyn Road
West Wimbledon, SW20 8TR**

Offers Over £1,100,000 Freehold



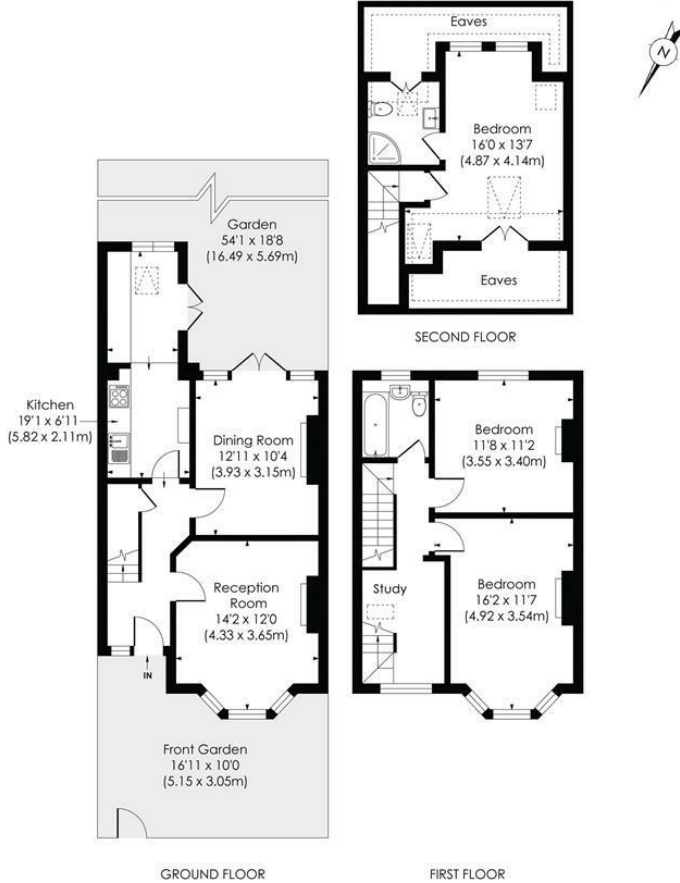
This attractive 1,393 sqft THREE DOUBLE BEDROOM, TWO BATHROOM, extended Edwardian Terrace House has a stunning South facing garden and is located in the highly sought after Lambton Conservation area only 0.2 Miles to Hollymount Primary School and 0.3 Miles to Raynes Park Station and High Street. There is a welcoming entrance hall with under stairs storage, two charming separate reception rooms with ornate fireplaces and a lovely extended modern kitchen. On the first floor there are two good sized double bedrooms, a family bathroom and a superb study area. The loft has also been converted creating a spacious principal bedroom with en suite shower room. Offered to the market with no onward chain.

KENWYN ROAD, SW20

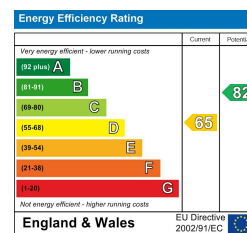
Approx. Gross Internal Floor Area

1393 Sq. ft./129.42 Sq. m (Including Reduced Height)

1179 Sq. ft./109.56 Sq. m (Excluding Reduced Height)



- 1,393 sqft - Three Double Bedroom - Two Bathroom
- Attractive Edwardian Terrace House
- Pretty South Facing Garden
- 0.2 Miles To Hollymount Primary School
- 0.3 Miles To Raynes Park High Street And Station
- Desirable Tree-Lined Road In The Lambton Conservation Area
- Spacious Principal Bedroom With En Suite
- No Onward Chain
- EPC - D
- Council Tax Band - F



For Free Mortgage Quote and Best Mortgage Rates, call Ellisons Mortgage Advisor on 0208 944 9595



Although these particulars are believed to be correct, their accuracy is not guaranteed and they do not form part of any contract.

Celebrating 30 years of successful Sales and Lettings in Merton

